

داتیسکار



شرکت تولیدی صنعتی

D A T I S K A R
INDUSTRIAL CO.

برج خنک کننده *Cooling Tower*





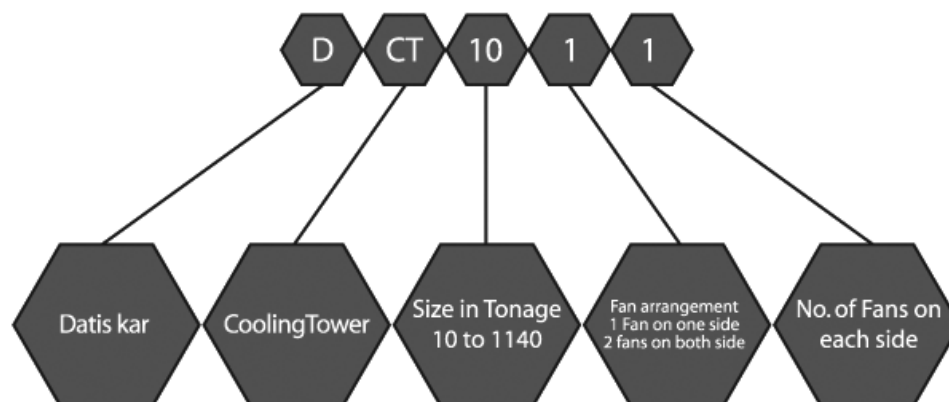
شرکت تولیدی صنعتی
داتیس کار

Water cooling towers are very frequently used in conjunction with air Conditioning or refrigeration units to provide outdoor dissipation of condenser heat rejection loads. Cooling towers may be used in many other industrial applications for economically subtracting the heat picked-up by the water in water-cooled process exchangers and making the water reusable.

The cooling tower is a practical application of the well known physical Principle that water evaporation in a heat consuming process. If the heat is not supplied by an external source, the evaporation of a part of the water will subtract heat from the remaining fluid, thus decreasing its temperature.

DATIS KAR cooling towers have the hot water distributed over the fill Pack by a bank of spraying nozzles. The nozzles are arranged so as to provide uniform water distribution over the entire face area of the fill.

The Water flows downward along the fill channels, crossing in counter flow the air blown-up by one or more fans which are housed in the base Section of the tower. The cold water collected in a pan located in the base section, then, is returned to the system for reuse





شرکت تولیدی صنعتی
داتیس کار

AXIAL COOLING TOWER PHYSICAL DIMENTIONS

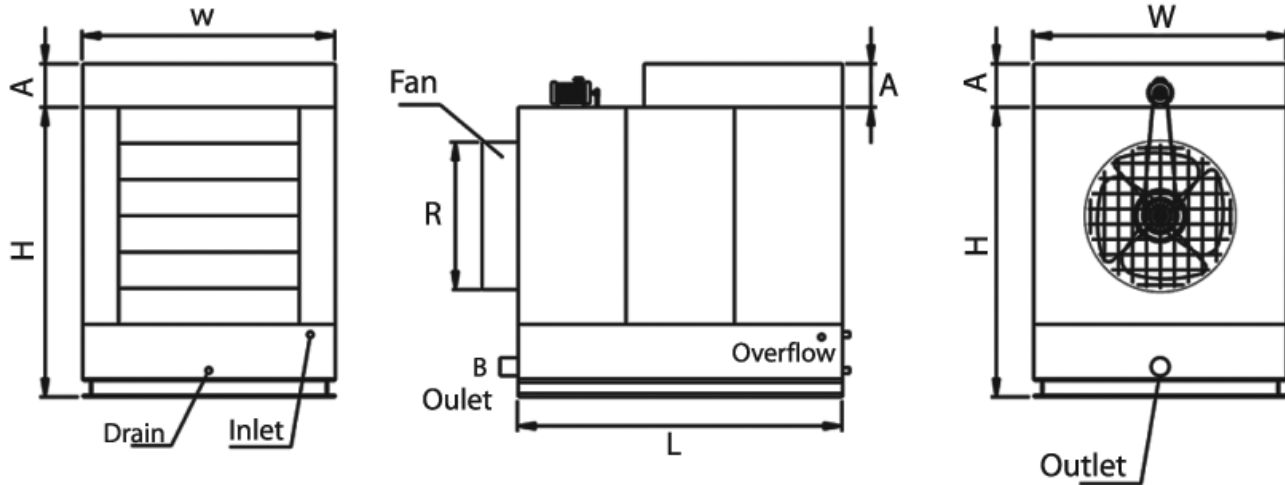


Table 1:

AXIAL COOLING TOWER PHYSICAL DIMENTIONS

MODEL	NOMINAL RATING		DIMENSIONS(mm)				FAN No * Dia	Motor No* HP	PIPING CONNECTIONS					R (mm)	WEIGHT (kg)	
	STONE	GPM	W	L	H	A			INLET	OUTLET (B)	OVERFLOW	MAKE UP	DRAIN		NET	OVER
DCT-A10	10	30	700	1300	1300	200	1x650	1x3/4	1"	2"	1/2"	1/2"	1"	700	220	440
DCT-A15	15	45	900	1350	1700	200	1x850	1x3/4	1 1/2"	2 1/2"	1/2"	1/2"	1"	900	260	520
DCT-A30	30	90	1300	1350	1900	200	1x850	1x1	1 1/2"	2 1/2"	1/2"	1/2"	1"	900	540	1050
DCT-A45	45	135	1300	2500	1900	200	1x950	1x1	1 1/2"	3"	3/4"	3/4"	1 1/2"	1000	800	1500
DCT-A60	60	180	1900	2500	1900	200	1x950	1x1.5	1 1/2"	3"	3/4"	3/4"	1 1/2"	1000	870	1700
DCT-A75	75	225	1900	2500	1900	200	1x1000	1x2	1 1/2"	3"	3/4"	3/4"	2"	1050	1100	2000
DCT-A90	90	270	1900	2500	2300	200	1x1100	1x2	1 1/2"	4"	1"	1"	2"	1150	1250	2250
DCT-A120	120	360	1900	2500	2600	200	1x1200	1x3	1 1/2"	4"	1"	1"	2"	1250	1550	2700
DCT-A150	150	450	3700	2500	1900	250	2x950	2x2	1 1/2"	2x4"	1"	1"	2 1/2"	2x1000	2200	4200
DCT-A180	180	540	3700	2500	2300	250	2x1000	2x2	1 1/2"	2x5"	1"	1"	2 1/2"	2x1050	2500	4500
DCT-A220	220	660	3700	2500	2500	250	2x1100	2x3	1 1/2"	2x5"	1"	1"	2x2"	2x1150	2900	5200



SINGLE FAN

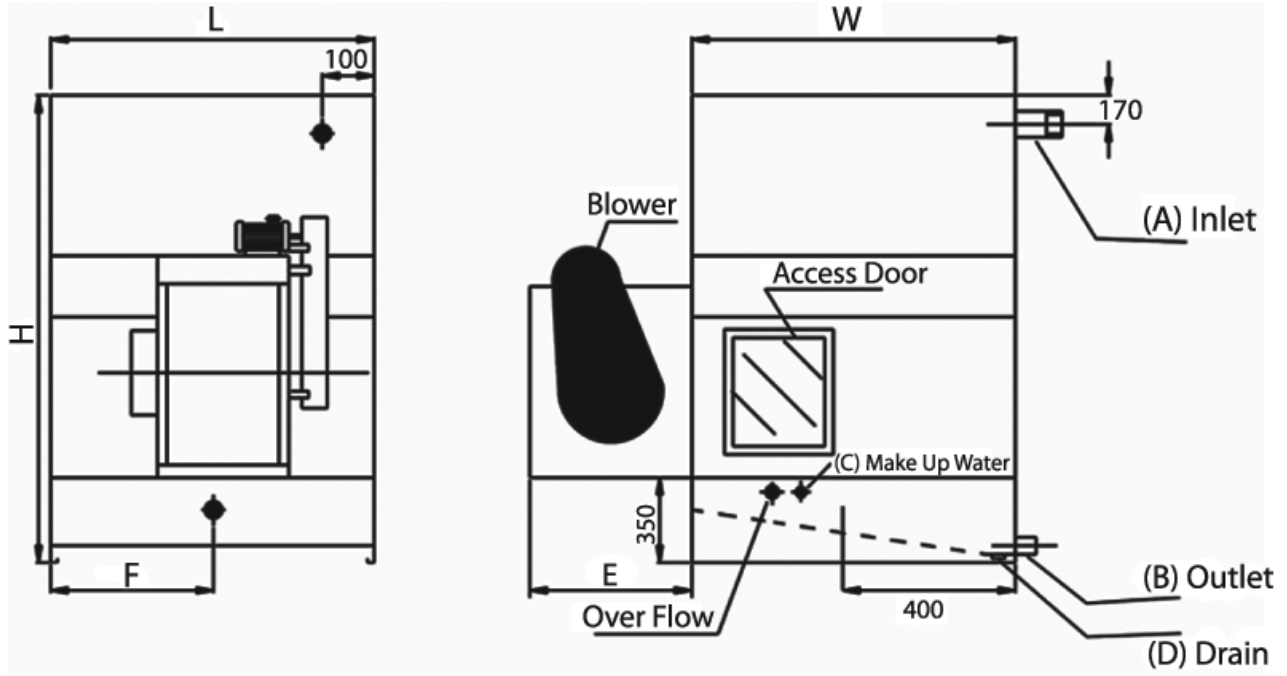


Table 2:

SINGLE FAN

MODEL	L	W	H	E	F	A	B	C	D	O
DCT-10-1-1	650	1100	1500	600	250	1 1/2"	1 1/2"	1/2"	3/4"	2"
DCT-15-1-1	800	1100	1500	680	360	1 1/2"	1 1/2"	1/2"	3/4"	2"
DCT-20-1-1	940	1100	1500	750	470	2"	2"	1/2"	3/4"	2"
DCT-25-1-1	940	1500	1900	750	470	2"	2"	1/2"	3/4"	2"
DCT-30-1-1	940	1500	1900	800	470	3"	3"	1/2"	3/4"	2"
DCT-35-1-1	940	1880	1900	950	470	3"	3"	3/4"	1"	2"
DCT-40-1-1	940	1880	2300	950	470	3"	3"	3/4"	1"	2"
DCT-45-1-1	1150	1900	2300	950	470	3"	3"	3/4"	1"	2"
DCT-50-1-1	1200	1950	2300	950	600	3"	3"	3/4"	1"	2"
DCT-60-1-1	1600	1950	2300	950	720	4"	4"	3/4"	1"	2"



شرکت تولیدی صنعتی
داتیس کار

FAN ON ONE SIDE

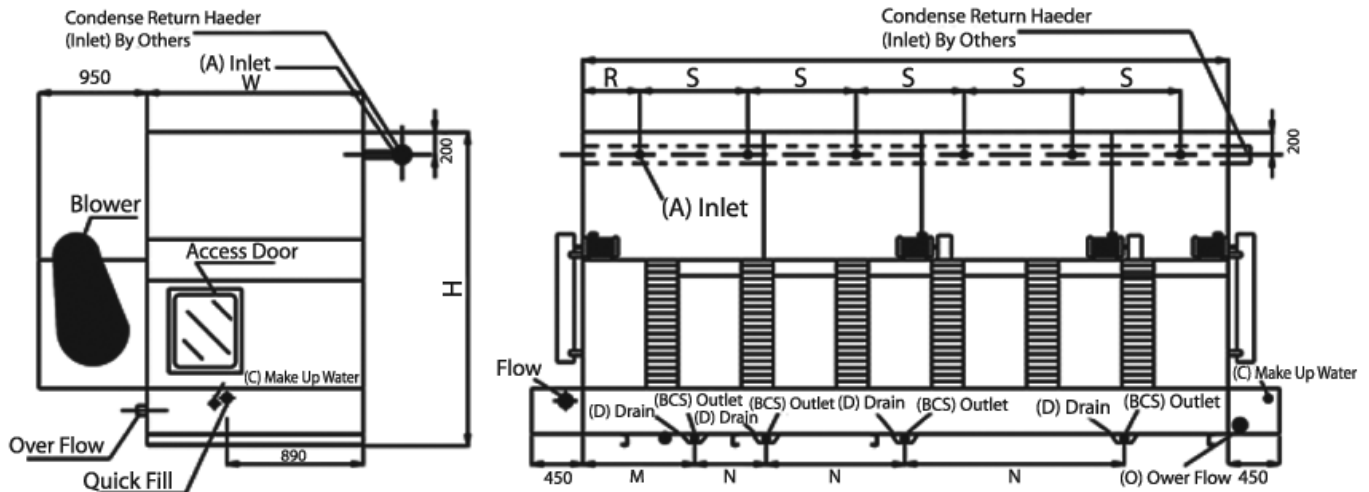


Table 3:

FAN ON ONE SIDE

Model	L	W	H	NOxA	NOxB	NOxC	NOxD	NOxO	Q	M	NOxN	R	NOxS
DCT-75-1-1	1850	1950	2300	1x4"	1x4"	1x1"	1x1"	1x2"	1"	900			
DCT-90-1-1	1950	1950	2300	1x4"	1x4"	1x1"	1x1"	1x2"	1"	1000			
DCT-105-1-1	2500	1950	2400	3x3"	1x4"	1x1"	1x1"	1x2"	1"	1200		400	2x800
DCT-120-1-1	2900	1950	2500	3x3"	1x5"	1x1"	1x1"	1x2"	1"	1450		500	2x950
DCT-140-1-1	3250	1950	2500	4x3"	1x5"	1x1"	1x1"	1x2"	1"	1650		400	3x850
DCT-160-1-1	3700	2100	2500	4x3"	2x4"	1x1"	2x1"	1x2"	1"	1000	1x1900	500	3x950
DCT-180-1-1	4200	2100	2500	5x3"	2x4"	1x1"	2x1"	1x2"	1"	1000	1x2200	400	4x850
DCT-220-1-1	5000	2200	2500	6x3"	3x4"	1x1"	3x1"	1x2"	1"	1000	2x1450	550	4x950
DCT-260-1-1	5500	2200	2500	6x3"	3x4"	1x1"	3x1"	1x2"	1"	1000	2x1900	500	5x950
DCT-300-1-1	6900	2200	2500	8x3"	3x5"	2x1"	3x1"	2x2"	1"	1000	2x2400	550	6x950



FANS ON BOTH SIDES - SUBJECT TO MODIFICATION

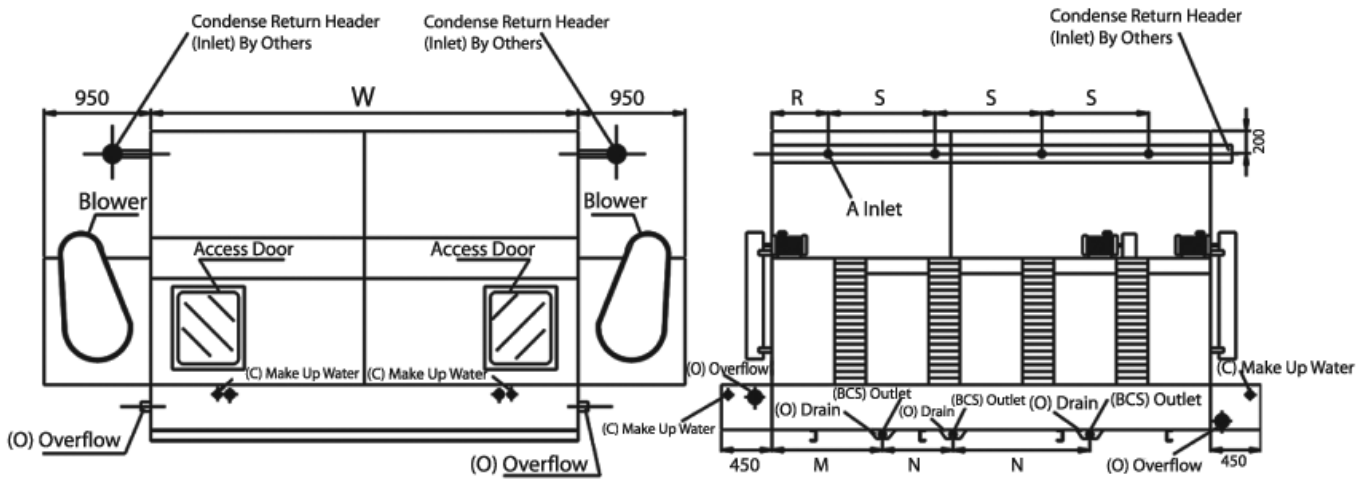


Table 4:

FANS ON BOTH SIDES - SUBJECT TO MODIFICATION

MODEL	L	W	H	NOxA	NOxB	NOxC	NOxO	Q	M	NOxN	R	NOxS
DCT-400-2-5	4900	3800	2500	8x3"	4x5"	2x1"	2x2"	1"	1000	1x1800	500	3x950
DCT-450-2-6	5600	3800	2500	10x3"	4x5"	2x1"	2x2"	1"	1000	1x1800	500	4x950
DCT-500-2-6	5800	3800	2500	12x3"	4x5"	2x1"	2x2"	1"	1000	1x1800	450	5x950
DCT-580-2-7	7000	3800	2500	12x3"	4x5"	2x1"	2x2"	1"	1000	1x1800	500	5x950
DCT-660-2-7	8000	3800	2500	14x3"	4x5"	4x1"	2x2"	1"	1000	1x1800	550	6x950
DCT-740-2-8	9000	3800	2500	16x3"	5x5"	4x1"	4x2"	1"	1000	1x1800	550	7x950
DCT-820-2-9	10500	3800	2500	18x3"	6x5"	4x1"	4x2"	1"	1000	2x900	550	8x950
DCT-900-2-10	11500	3800	2500	20x3"	6x5"	4x1"	4x2"	1"	1000	2x900	550	9x950
DCT-980-2-12	12000	3800	2500	22x3"	6x5"	4x1"	4x2"	1"	1000	2x900	550	10x950
DCT-1060-2-12	13500	3800	2500	24x3"	8x5"	4x1"	4x2"	1"	1000	3x600	550	11x950
DCT-1140-2-14	14000	3800	2500	26x3"	8x5"	4x1"	4x2"	1"	1000	3x600	550	12x950



شرکت تولیدی صنعتی
داتیس کار

Physical Data

Table 5:

Model	NOMINAL RATING		MOTOR		BLOWER		Air Flow PD		DIMENSION			WEIGHT (kg)	
	Tons	GPM	NO	HP	Size(In)	NO	CFM	Ft	L	W	H	NET	OPER
DCT-10-1-1	10	30	1	3/4	14"	1	2500	22	650	1100	1500	270	380
DCT-15-1-1	15	45	1	1 1/2	16"	1	4000	22	800	1100	1500	320	480
DCT-20-1-1	20	60	1	2	18"	1	5500	22	940	1100	1500	380	580
DCT-25-1-1	25	75	1	2	18"	1	7000	22	940	1500	1900	460	720
DCT-30-1-1	30	90	1	2.5	18"	1	7500	22	940	1500	1900	570	860
DCT-35-1-1	35	105	1	3	20"	1	9000	22	940	1880	1900	640	990
DCT-40-1-1	40	120	1	4	22"	1	11000	22	940	1880	2300	690	1080
DCT-45-1-1	45	135	1	4	22"	1	11500	23	1150	1900	2300	750	1150
DCT-50-1-1	50	150	1	5.5	22"	1	14000	23	1200	1950	2300	800	1300
DCT-60-1-1	60	180	1	5.5	22"	1	17000	23	1600	1950	2300	980	1750
DCT-75-1-2	75	225	1	7.5	22"	2	21000	23	1850	1950	2300	1400	2500
DCT-90-1-2	90	270	1	10	22"	2	23000	23	1950	1950	2300	1450	2600
DCT-105-1-2	105	315	1	10	22"	2	28000	23	2500	1950	2400	1600	3000
DCT-120-1-3	120	360	2	1×10 1×5.5	22"	3	34000	23	2900	1950	2500	2050	3800
DCT-140-1-3	140	420	2	1×10 1×7.5	22"	3	39000	23	3250	1950	2500	2300	4300
DCT-160-1-4	160	480	2	2×10	22"	4	45000	23	3700	2100	2500	2900	5100
DCT-180-1-4	180	540	2	2×10	22"	4	49000	23	4200	2100	2500	3000	5400
DCT-220-1-5	220	660	3	2×10 1×5.5	22"	5	52000	23	5000	2200	2500	3500	6300
DCT-260-1-6	260	780	3	3×10	22"	6	65000	23	5500	2200	2500	4100	7400
DCT-300-1-7	300	900	4	3×10 1×5.5	22"	7	75000	23	6900	2200	2500	4700	8600
DCT-400-2-5	400	1200	6	2×5.5 4×10	22"	10	110000	23	4900	3800	2500	6300	11800
DCT-450-2-6	450	1350	6	6×10	22"	12	128000	23	5600	3800	2500	7800	14000
DCT-500-2-6	500	1500	6	6×10	22"	12	135000	23	5800	3800	2500	7900	14500
DCT-580-2-7	580	1740	8	2×5.5 6×10	22"	14	160000	23	7000	3800	2500	9500	17000
DCT-660-2-7	660	1980	8	2×7.5 6×10	22"	14	175000	23	8000	3800	2500	10400	19000
DCT-740-2-8	740	2220	8	8×10	22"	16	190000	23	9000	3800	2500	11600	21400
DCT-820-2-9	820	2460	10	2×5.5 8×10	22"	18	210000	23	10500	3800	2500	13000	23800
DCT-900-2-10	900	2700	10	10×10	22"	20	220000	23	11500	3800	2500	13700	25000
DCT-980-2-12	980	2940	12	12×10	22"	24	240000	23	12000	3800	2500	15000	28000
DCT-1060-2-13	1060	3180	14	2×5.5 12×10	22"	26	260000	23	13500	3800	2500	16000	30000
DCT-1140-2-14	1140	3420	14	14×10	22"	28	300000	23	14000	3800	2500	16600	32000



شرکت تولیدی صنعتی
داتیس کار

Cooling Tower



- Complete Pakage Unit
- Hot Air Furnace
- Hot Water Boiler
- Heat Exchanger

- Air Handling Unit
- Steam Boiler
- Unit Heater
- Air Washer

تهران، خیابان میرداماد، میدان مادر، خیابان وزیری پور، کوچه خسروانی

پلاک ۴، طبقه ۴، واحد ۲۴ کد پستی: ۱۵۴۶۷۳۳۵۴۸

تلفن: ۸ - ۲۲۹۲۳۸۶۵ - ۲۲۹۲۳۸۶۴ تلفکس:

Web Site: www.datiskar.ir

E-mail: info@datiskar.ir

